



opticamSWITCH | fiber optic camera switch operator panel

This document describes the use of the **opticamSWITCH** Operator Panel 1.10.0.0, which provides an easy-to-use set up to operate and control the **opticamSWITCH** via PC.

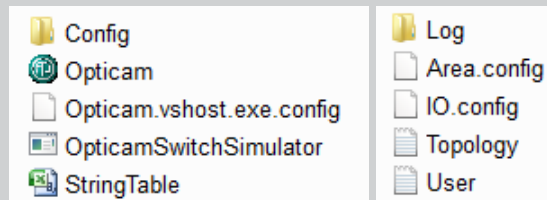


CONTENT

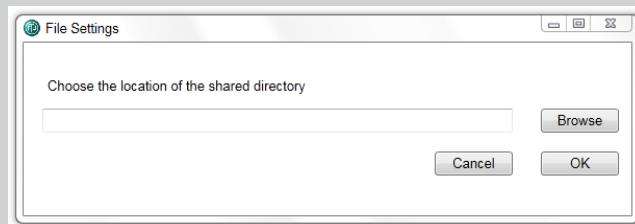
1.	FIRST SET-UPS	3
2.	INTRODUCTION TO THE SOFTWARE SURFACE	4
3.	OPTICAMSWITCH DETAILS	5
4.	CONFIGURATIONS	6
4.1.	Main Configurations	6
4.2.	Display Properties	7
4.3.	Colors and Text	7
5.	HOW TO USE THE OPTICAMSWITCH	8
5.1.	Open/Close Studios and Control Rooms	8
5.2.	Connecting Studios and Control Rooms	8
5.3.	Deleting connections between Studios and Control Rooms	10
5.4.	Presets	12



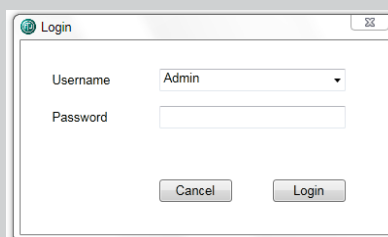
1. First Set-Ups



Operator Panel Folders and Files after installation

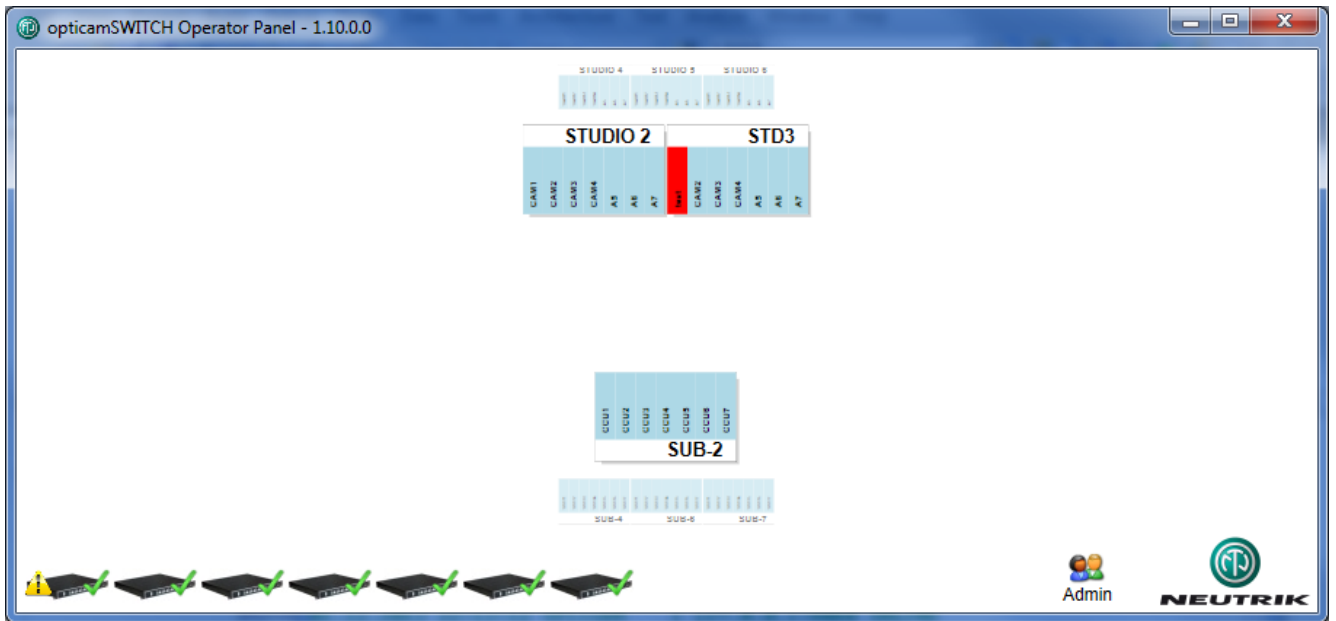


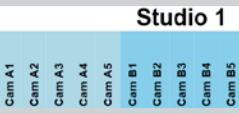
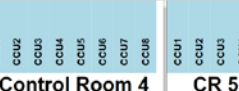


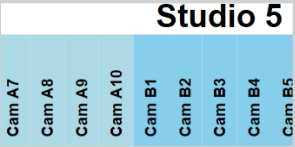

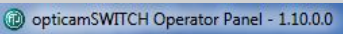
During first start-up, choosing the location of the Config folder is necessary. It is recommended to store the Config folder on the internal network, which can ideally be accessed from several working stations. The Config folder is the location for the log file, saved presets, user information and the topology file. The IP address and the routing structure are defined in the topology file.



When starting to work with the software, Username and Password are required. Initial Password: "password" Additional users can be added and the password can be changed in the menu field "main configurations" (see chapter 4.1).

2. Introduction to the Software Interface



1	<p>Connection areas represent all studios and comprise all camera positions (Cams).</p>	
2	<p>CRs/Control Rooms comprise all camera control unit positions (CCUs).</p>	
3	<p>All devices in use are shown in the bottom left corner of the software user interface</p> <p>opticamSWITCH has been successfully connected if a green tick is shown.</p> <p>No successful connection has been made if a red cross appears.</p>	
4	<p>Non configured switch status in topology (WARNING)</p>	
5	<p>In this example, two connection panels (A = light blue and B = blue) are in use.</p> <p>E.g. Studio 5: Panel A for Cam A1 – A10 Panel B for Cam B1 – B5</p>	
6	<p>Username and Logout Button</p>	
7	<p>Software version 1.10.0.0</p>	

3. opticamSWITCH Details

When moving the mouse cursor over the opticamSWITCH icon in the bottom left corner, a summary of technical details appears:

The screenshot shows a tooltip window with the following data:

```

Name: OS3
IP Address: [192.168.1.150]
Info: STATUS 0000
      IP [192.168.1.150]
      NET [0.0.0.0]
      MAC [00-04-a3-a3-d3-00]
      HWRel 001
      SWRel 0.01
      SWDat 15.05.2013
Supply Main
Temp 038
CCU CCU1 CCU2 CCU3 CCU4
CAM free free free free
Type unknown unknown unknown unknown
Volt 0 0 0 0
Curr 0 0 0 0
Vlim 120 120 120 120
Clim 5000 5000 5000 5000
SafeOpV yes yes yes yes
SafeOpC yes yes yes yes
S-Fuse ok ok ok ok
State: 0000
    
```

1	Name of opticamSWITCH as defined in topology file
3	Switching state: number identifies Input CCUs = Output, CAMs = Input
5	Mac address of micro controller
7	Supply: Main or Aux Aux (Auxiliary): substitution of Main supply
9	Type of voltage (AC/DC)
11	Voltage and current limits
13	Fuse status

2	IP address of opticamSWITCH
4	Sub net mask
6	Hardware Release Number, Software Release Number, Software Release Date
8	Processor temperature
10	Value of voltage and current
12	IPWC (Intelligent Power Working Circuit Status) Yes: Switching possible / No: Switching blocked

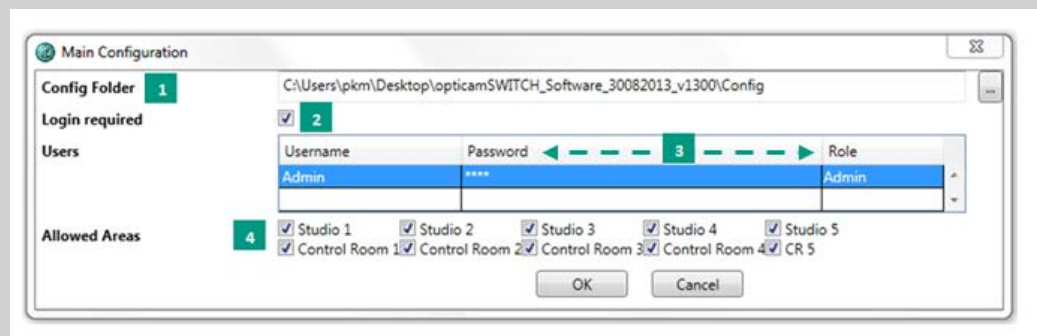
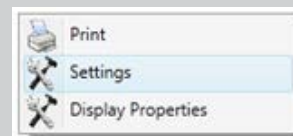


4. Configurations

4.1. Main Configurations

Right-click on a white area in the software to open the menu field on the right.

Click "Settings" in order to change main configurations.



1 Showing path of Config folder

2 Possibility of changing password (login)

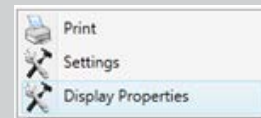
3 If a user's "Role" is "Admin", modifying the password and adding additional users is possible.

4 Specific area allowances can be granted to different users.
E.g.: User "Admin" can change configurations of all Studios and Control Rooms.

4.2. Display Properties

Right-click on a white area in the software to open the menu field on the right.

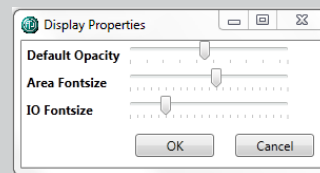
Click "Display Properties" in order to change them.



Default opacity changes the transparency of the background.

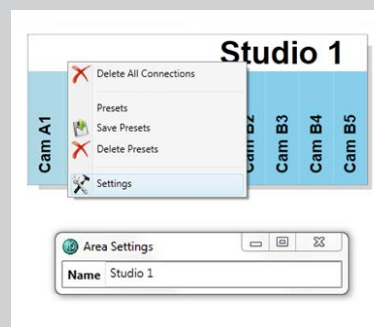
Area Fontsize modifies the size of the horizontal headlines.

IO Fontsize adjusts the size of the vertical text.



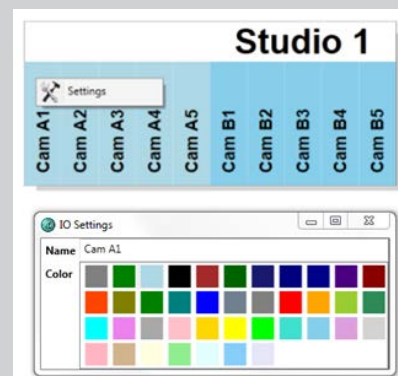
4.3. Colors and Text

Right-click on a Studio or Control Room and choose "Settings" in order to change name of Studio or Control Room.



Open a Studio or Control Room (see chapter 5.1) in order to change configurations of colors and text.

Right-click on a certain Camera (e.g. Cam A1) or CCU and choose "Settings" in order to change name of Camera or CCU and decide on a background color of the column.



5. How to Use the opticamSWITCH

5.1. Open/Close Studios and Control Rooms

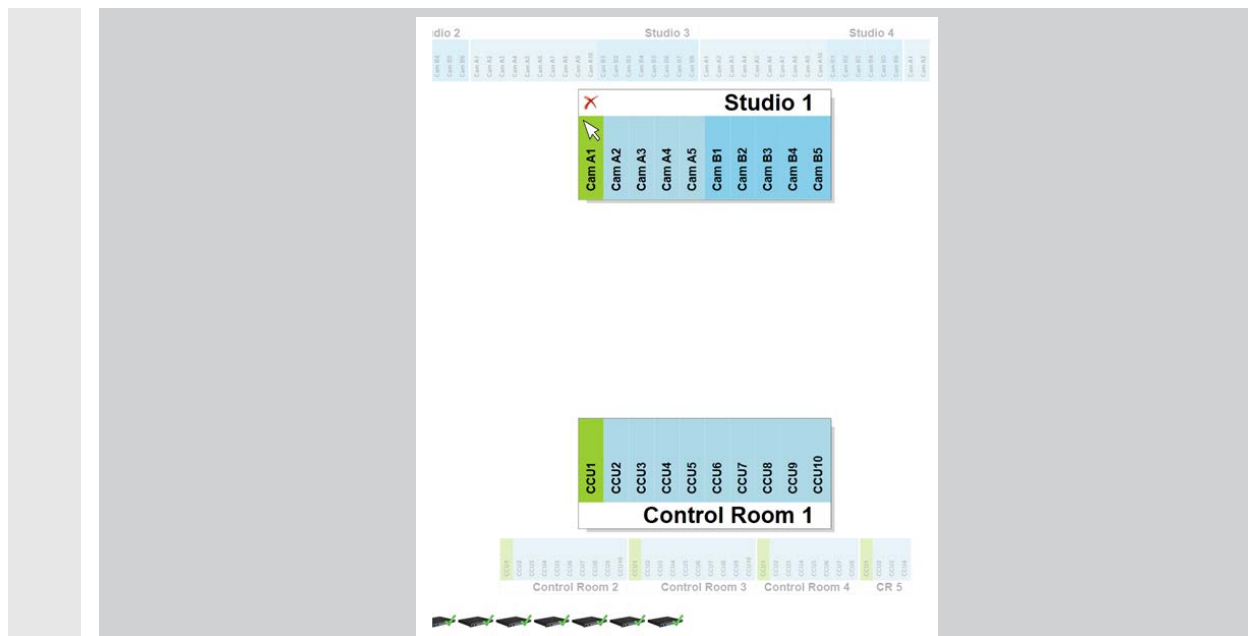


Double click on a Studio (or Control Room) in order to open it. It will then pop up in the foreground.

Double click on the white area of a Studio (or Control Room) to close it. It will vanish and appear again in the background.

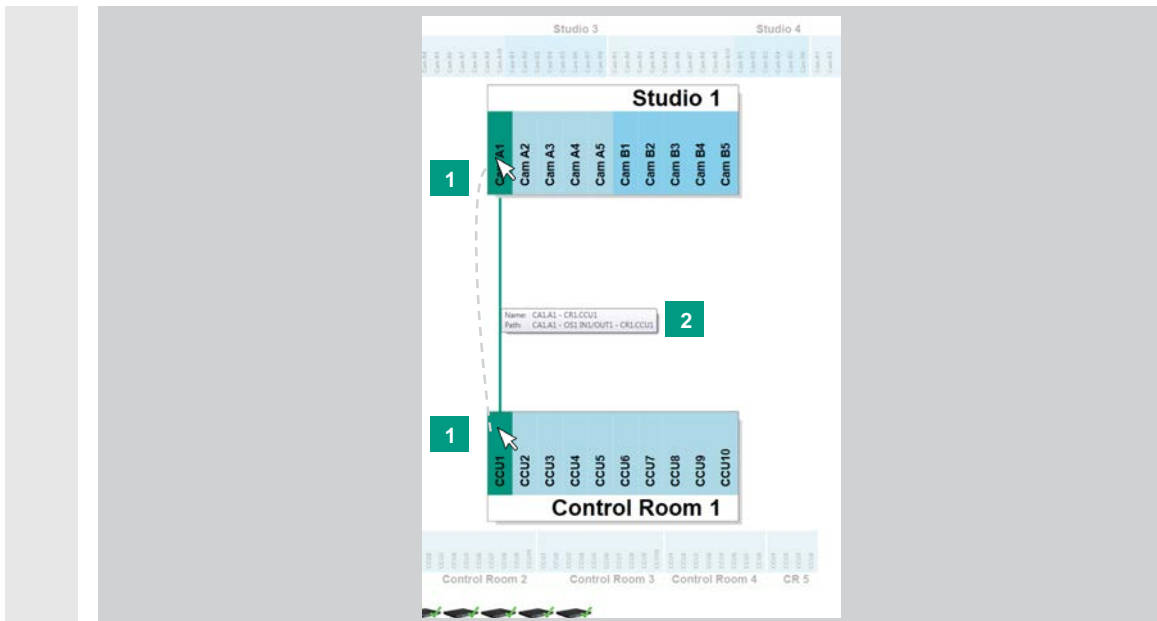
Note: Creating or deleting connections is only possible with open Studios or Control Rooms, not with the closed (and therefore more transparent) ones in the background!

5.2. Connecting Studios and Control Rooms



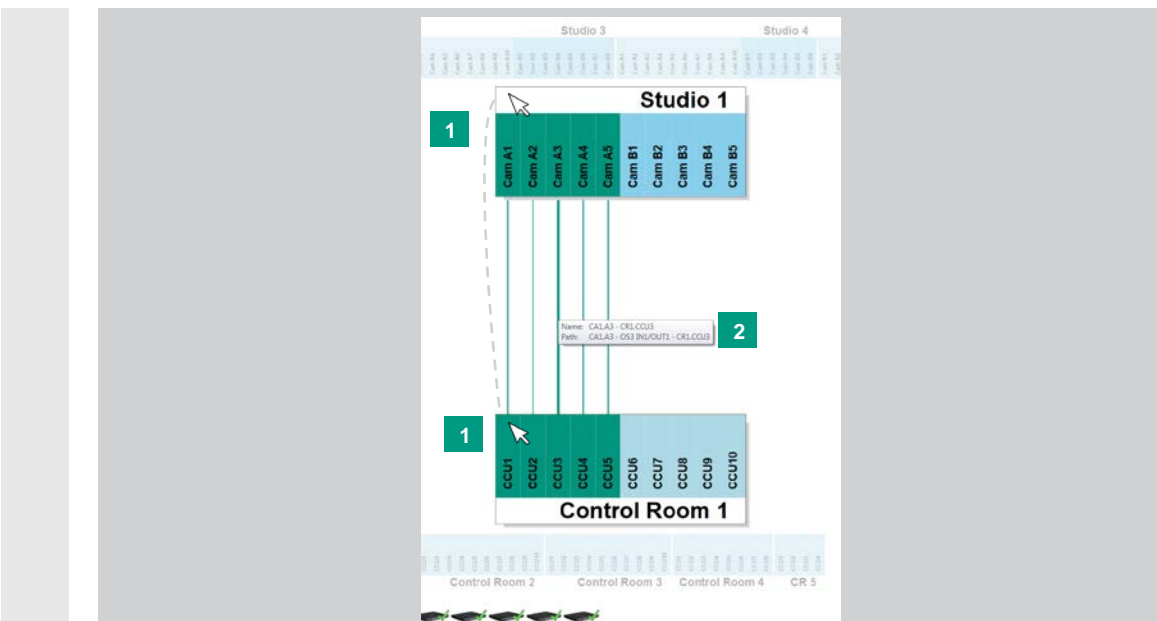
Green fields show possible connections between Cameras and CCUs.

Note: Green fields only appear if mouse is moved over Cam or CCU fields in open Studios or Control Rooms!



1 To create a single link between a certain Camera and a CCU, left-click on a Cam (or CCU), keep the mouse button pressed and draw downwards (or upwards) until reaching the CCU (or Cam).

2 The path of the link can be seen if the mouse is moved over the connection.



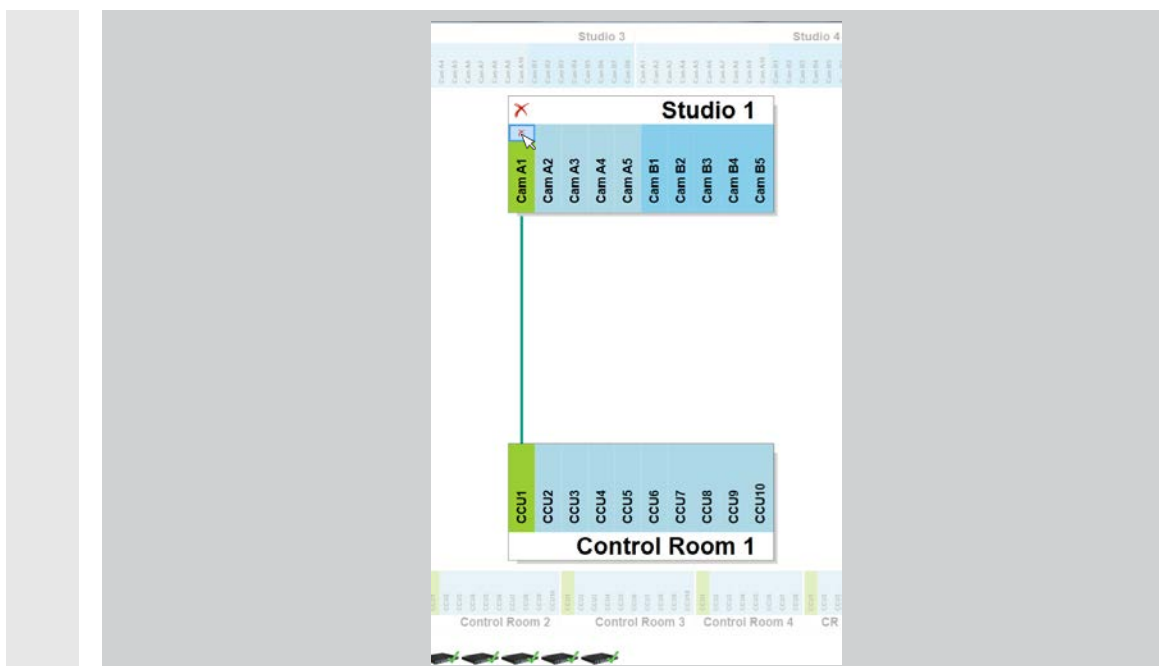
1 To create multiple links between Cameras and CCUs at once, left-click on the white area of the Studio (or CR) field, keep the mouse button pressed and draw downwards (or upwards) until reaching the Control Room field (or Studio).

2 The path of the links can be seen if the mouse is moved over the connections.

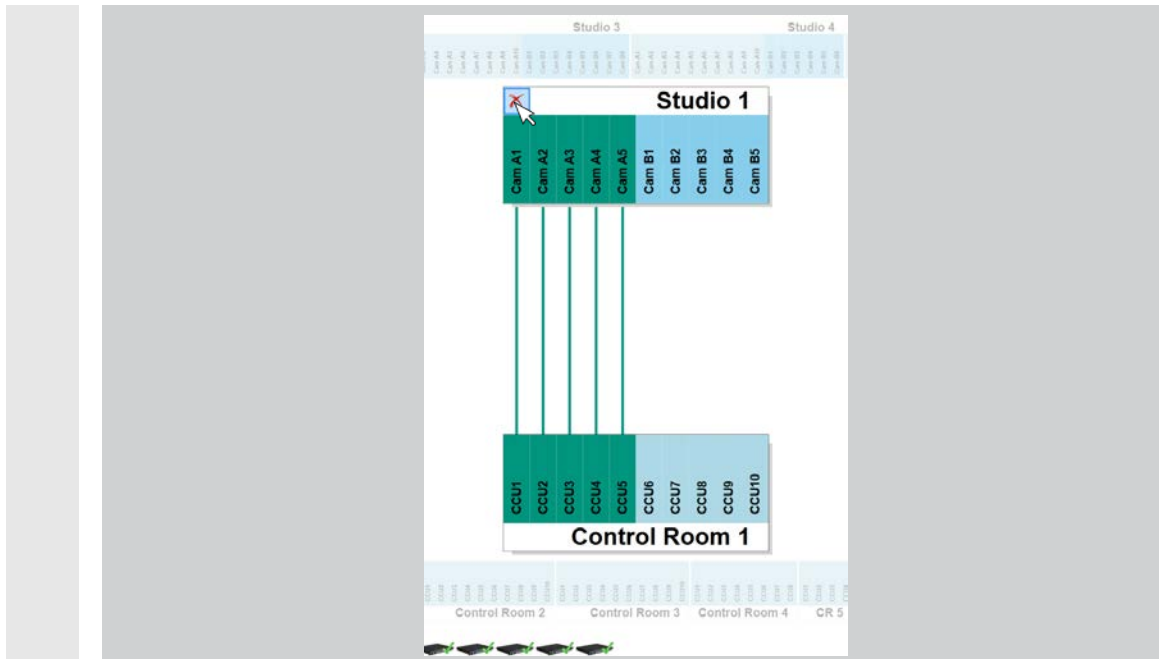


If drawing a connection between Cams and CCUs is not possible, there might already exist another connection which has to be deleted first in order to create a new one. This connection is highlighted in red.

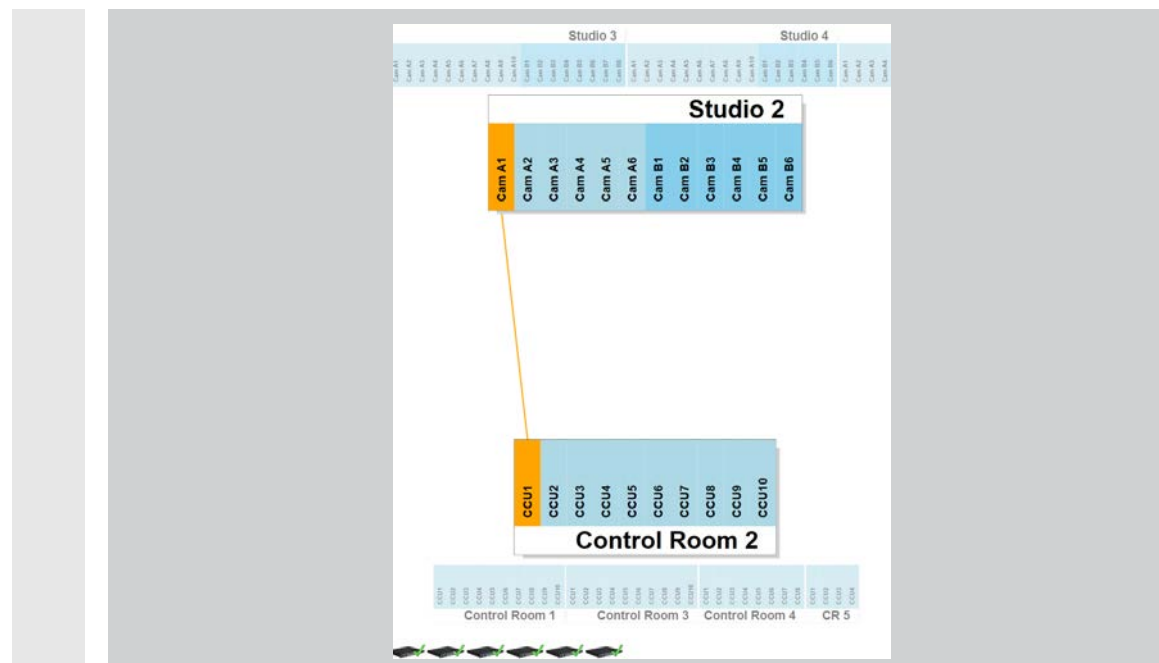
5.3. Deleting Connections between Studios and Control Rooms



To delete a single connection, click on the little red cross in the desired column of either Cam or CCU.

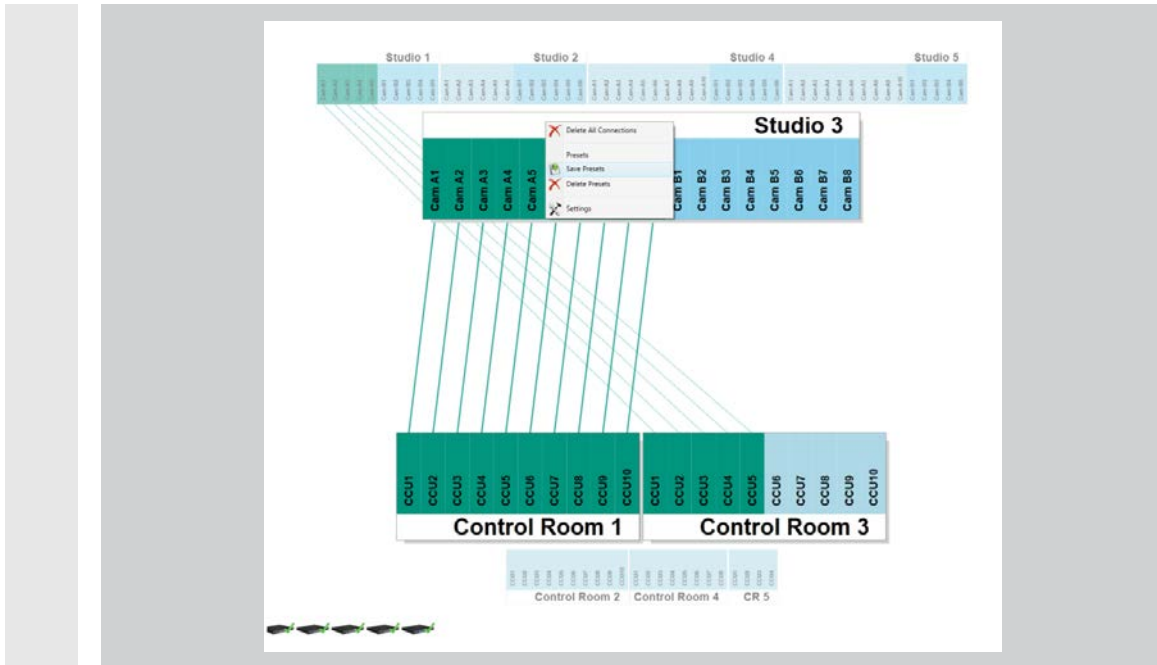


To delete all connections of either a Studio or a Control Room, click on the large red cross in the corner of the desired Studio or Control Room.

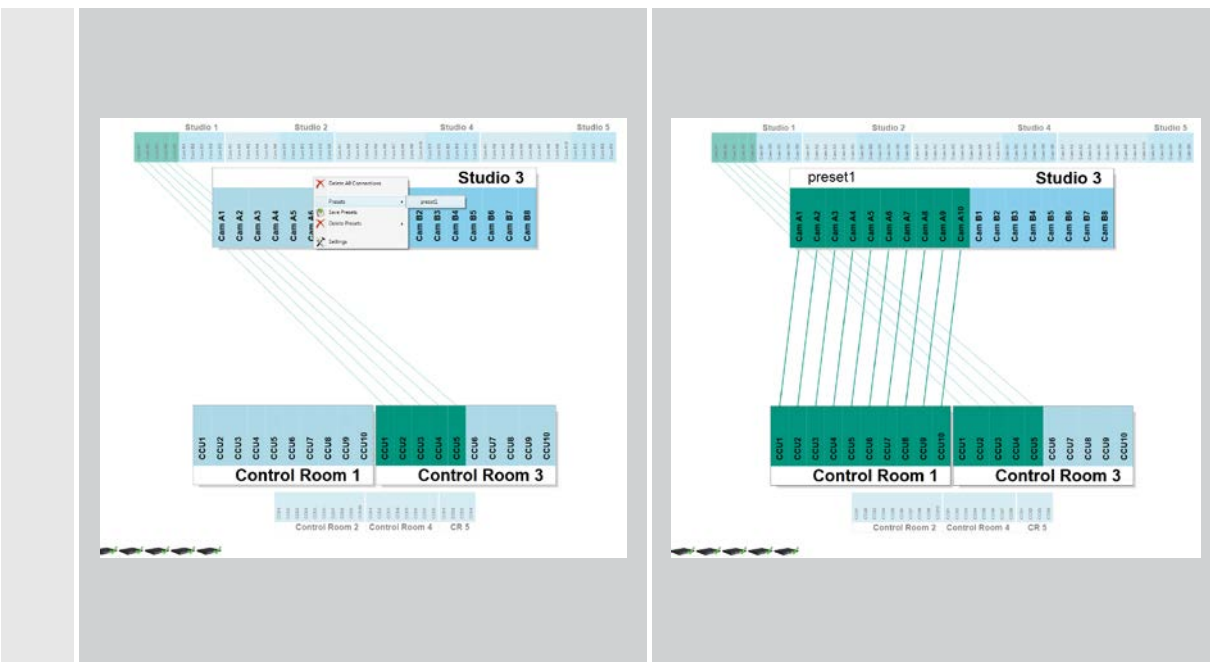


The opticomSWITCH is equipped with an Intelligent Power Working Circuit, protecting the electrical relays from switching under load if the voltage exceeds the maximum voltage. Once the voltage exceeds this maximum, the deleting of connections as highlighted in orange is blocked. Switch off the camera in order to be able to delete the connection.

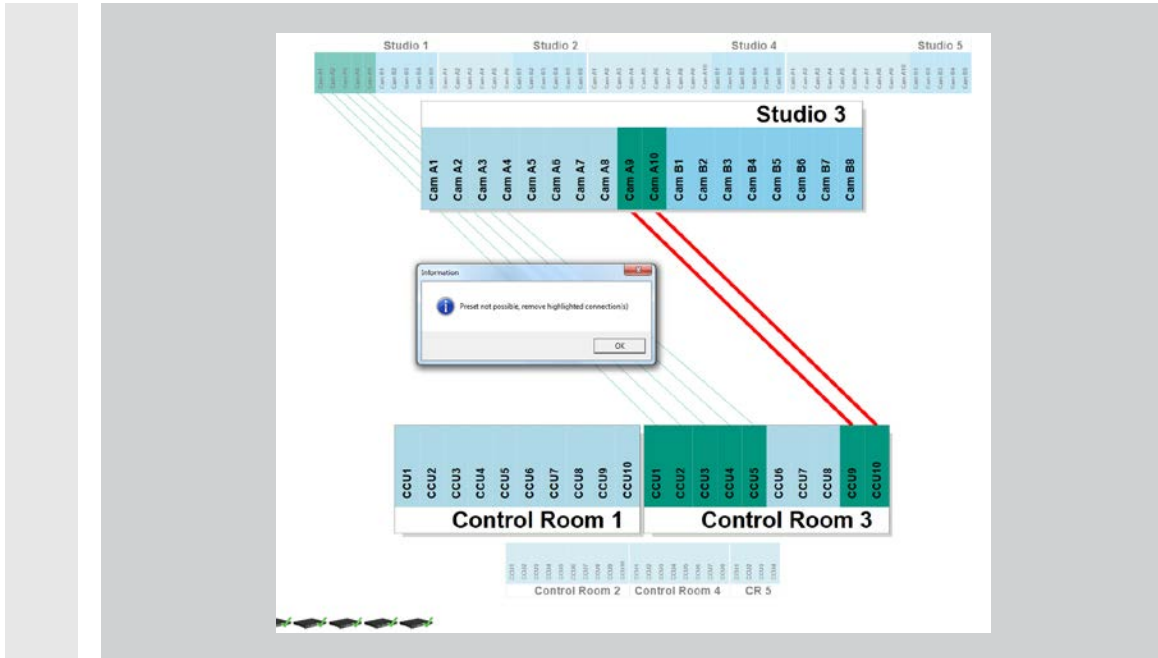
5.4. Presets



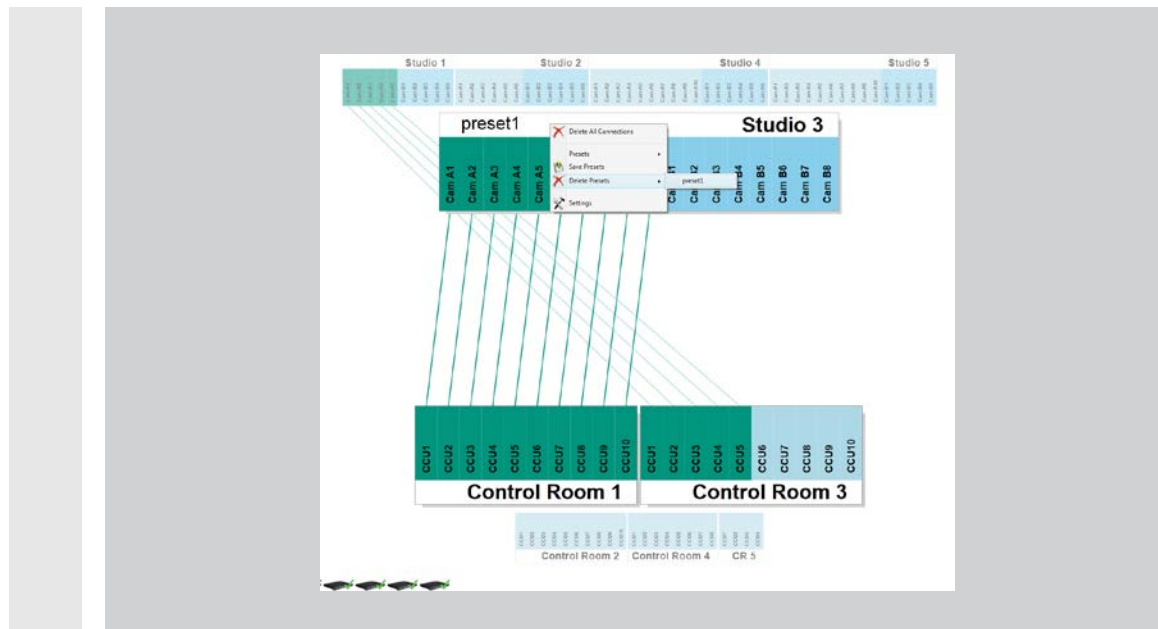
In order to create a preset, right-click on the white area of either a Studio or a Control Room, click Save Presets, name and save it.



Click Preset and choose the desired preset in order to use it.



If one or more connections being part of the preset are already in use otherwise, an error message will appear. The connection/s in use has/have to be deleted before the preset can be used.



In order to delete a preset, right-click on the white area of either a Studio or a Control Room, choose Delete Presets and the desired preset.



Liechtenstein (Headquarters)

NEUTRIK AG, Im alten Riet 143, 9494 Schaan
T +423 237 24 24, F +423 232 53 93, neutrik@neutrik.com

Germany/Netherlands/Denmark/Austria

Neutrik Vertriebs GmbH, Felix-Wankel-Strasse 1, 85221 Dachau, Germany
T +49 8131 28 08 90, info@neutrik.de

Great Britain

Neutrik (UK) Ltd., Westridge Business Park, Cothey Way
Ryde, Isle of Wight PO33 1 QT
T +44 1983 811 441, sales@neutrik.co.uk

France

Neutrik France SARL, Rue du Parchamp 13, 92100 Boulogne-Billancourt
T +33 1 41 31 67 50, info@neutrik.fr

USA

Neutrik USA Inc., 4115 Taggart Creek Road, Charlotte, North Carolina, 28208
T +1 704 972 30 50, info@neutrikusa.com

Japan

Neutrik Limited, Yusen-Higashinonbashi-Ekimae Bldg., 3-7-19
Higashinonbashi, Chuo-ku, Tokyo 103
T +81 3 3663 47 33, mail@neutrik.co.jp

Hong Kong

Neutrik Hong Kong LTD., Suite 18, 7th Floor Shatin Galleria
Fotan, Shatin
T +852 2687 6055, neutrik@neutrik.com.hk

China

Ningbo Neutrik Trading Co., Ltd., Shiqi Street, Yinxian Road West
Fengjia Villiage, Yinzhou Area, Ningbo, Zhejiang; 315153
T +86 574 88250488 800, neutrik@neutrik.com.cn

India

Neutrik India Pvt. Ltd., Level 3, Neo Vikram, New Link Road,
Above Audi Show Room, Andheri West, Mumbai, 400058
T +91 982 05 43 424, anklesaria@neutrik.com

Associated companies

Contrik AG

Steinackerstrasse 35, 8902 Urdorf, Switzerland
T +41 44 736 50 10, contrik@contrik.ch

H. Adam GmbH

Felix-Wankel-Straße 1, 85221 Dachau, Germany
T +49 08131 28 08-0, info@adam-gmbh.de