



User Manual

NA2-IO-DPRO Yamaha CL/QL Setup



NEUTRIK®

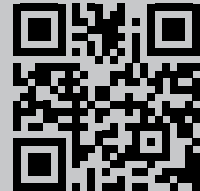
Yamaha CL/QL Setup for NA2-IO-DPRO (further DPRO)

SYSTEM REQUIREMENTS

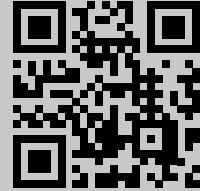
- PC or MAC with installed software:



DPRO Controller from Neutrik (optional)
(free download from [neutrik.com](https://www.neutrik.com))



Dante® Controller from Audinate (required)
(free download from [audinate.com](https://www.audinate.com))



- **Yamaha QL/CL digital mixing console**
(Firmware version 5.6 or higher)
- **NA2-IO-DPRO**
(Firmware version 9.12.0.0 or higher)

NETWORK SETTINGS FOR DPRO IN DPRO CONTROLLER (optional)

NOTE:

DPRO Controller is only needed to change the IP settings of the device.
The DPRO-IP settings are AUTOMATIC / DHCP by default.

- Open DPRO Controller from Neutrik
- Click on **Device** and choose **Network Settings**
- Choose between **AUTOMATIC** or **MANUAL** (set a static IP for the device)

NOTE:

Network Settings need to be checked for compatibility before using the device.
Use the same IP addressing strategy for CL/QL console as with DPRO.

ADJUST THE NAME OF THE DEVICE IN DANTE CONTROLLER

- The name of the device needs to be edited in **Dante Controller** so it begins with the format: **"YO**"**, where **"**"** is a hexadecimal number between 01 and FF (For example: **Y001**).
- The predefined hexadecimal number in Dante Controller can be completed by **" - "** and an individual name. For example: **Y001-DPRO**
- Apply and reboot the device

NOTE:

DPRO must be restarted to complete any changes (disconnected from power)



The DPRO Controller must be closed for further steps below.

YAMAHA NETWORK SETUP

1

Open the **SETUP** menu.

2

Go to **NETWORK**.

3

Select **FOR DEVICE CONTROL**.

(The IP address is set for controlling external devices within the Dante network)

4

Choose the required strategy for assigning IP addresses.

Select either DHCP, AUTO IP or STATIC IP

(Use the same IP addressing strategy for CL/QL console as with DPRO)

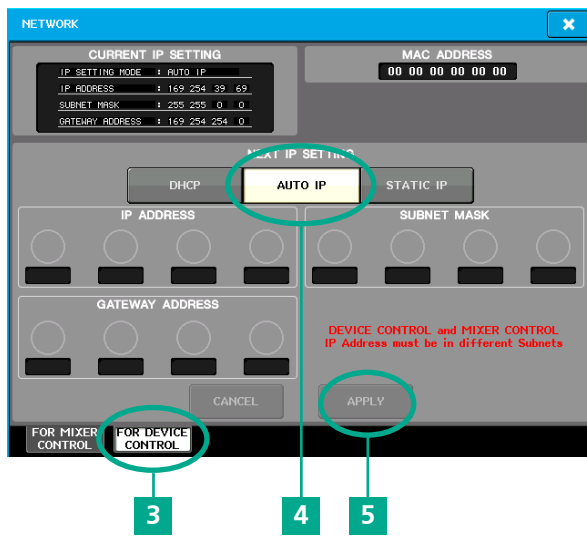
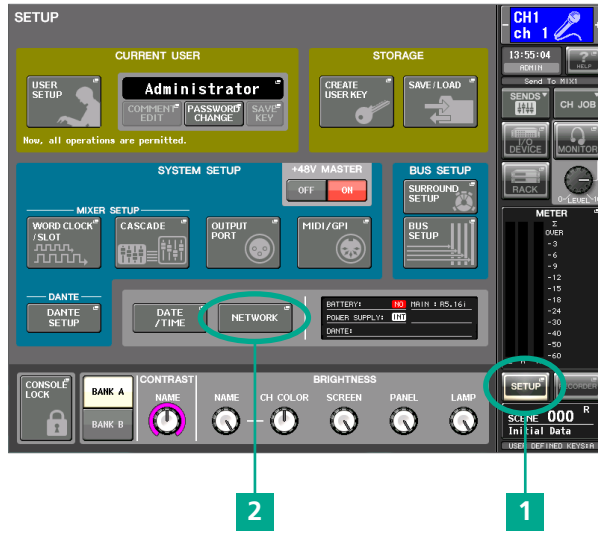
- **DHCP:** if a DHCP server is used in the network.
The IP settings will be assigned automatically within a range specified by the DHCP server.
- **AUTO IP:** for easy setup when a DHCP server is not used.
The IP address will be set within the 169.254.*.* range, with subnet mask 255.255.0.0.
- **STATIC IP:** for manual setup.
Choose this when the DPRO is set to "Manual" mode. Set an appropriate IP address, subnet mask and gateway address which is compatible with all the other devices in the network.

5

Press **APPLY** to confirm the settings.

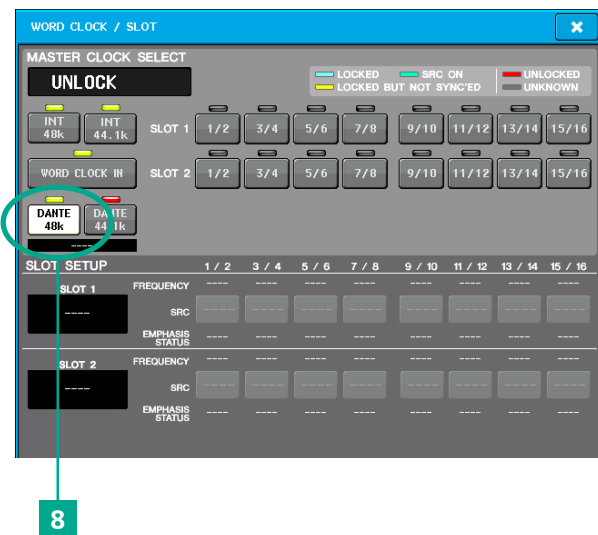
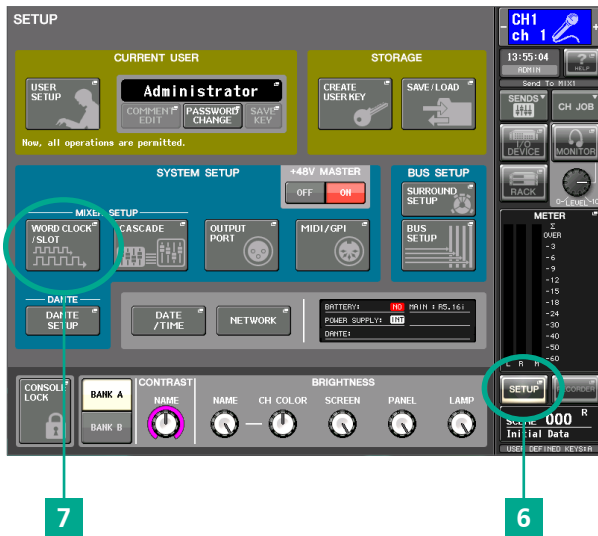


The console must be restarted to complete any changes.



YAMAHA DANTE SETUP

- 6 Open the **SETUP** menu,
- 7 Go to **"WORLD CLOCK"**.
- 8 Check that the master clock is running at 48 kHz.
The default Clock selection is **"DANTE 48k"**, which is usually ideal.

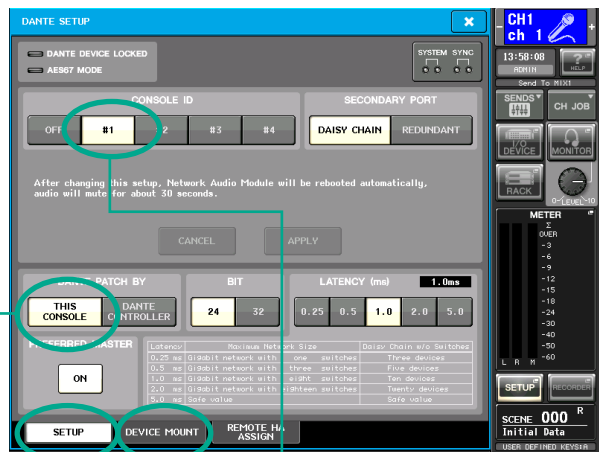




- 9** Open the **DANTE SETUP** window in the **SETUP** menu.
- 10** In the **SETUP** tab, check that the console has an ID number (ID #1 is the default). If there is only one CL/QL console in the system, then it must have ID #1.
- 11** If there is more than one console, then they must each have a different number, though one of them must have #1.
- 12** DANTE PATCH BY: **THIS CONSOLE** should be enabled. This is the default setting when ID #1 is set.
- 13** Move to the **DEVICE MOUNT** tab in the **DANTE® SETUP** window.



9




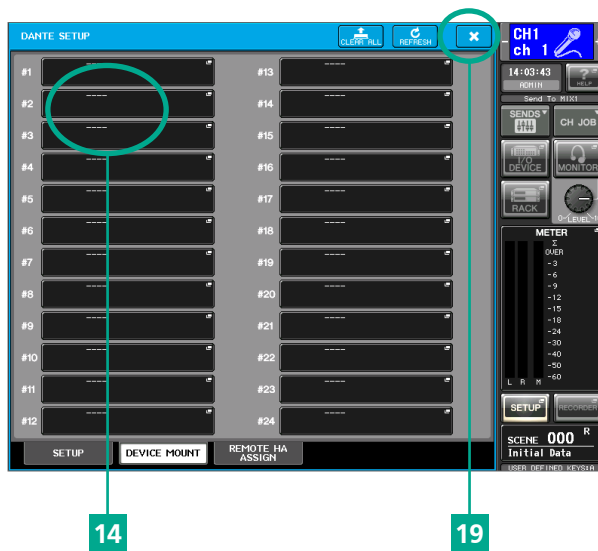
12

10

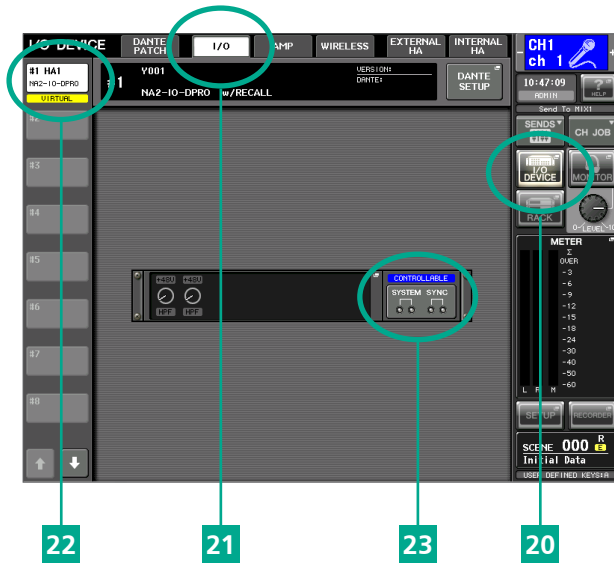
13

11

- 14 In the **DEVICE MOUNT** window, there is space for 24 devices to be mounted. Once mounted, Dante patching and control can be accessed. Touch a blank space to open the **DEVICE SELECT** pop-up.
- 15 Open **SUPPORTED DEVICE**.
- 16 Select "**Neutrik – AG: NA2-DPRO**" from the list.
- 17 Give the device a **UNIT ID**.
-  This unit ID must be exactly **the same** as set in Dante Controller (hexadecimal number between 01 and FF)
- 18 Press **OK** to confirm the settings.
- 19 Close the **DANTE SETUP** screen.



- 20** Click on **I/O DEVICE**.
- 21** Go to the **I/O** tab.
- 22** DPRO is listed on the left side. Click on it.
- 23** The DPRO is now shown
The status should be **CONTROLLABLE**.
If not, review the prior setup steps.



Imprint

Subject to change due to technical advances! This user manual corresponds to the level of technology at the time the product was delivered and not the current stage of development at Neutrik.

If any pages or sections of this user manual are missing, please contact the manufacturer at the address listed below.

Copyright

This user manual is protected by copyright. The user manual must not be duplicated, reproduced, microfilmed or translated, or converted to be saved and processed in EDP systems, neither as excerpts nor in full, without the express written authorization of Neutrik.

Copyright by: © Neutrik® AG

Document identification

Document No: BDA 580 V3
Version: 2021/04

Language: English
Original language: German

Each user manual in a different language is a translation of the operating manual in German.

Manufacturer

Neutrik® AG
Im alten Riet 143
9494 Schaan
Liechtenstein

T: +423 2372424
F: +423 2325393
E: neutrik@neutrik.com
www.neutrik.com

LIECHTENSTEIN (HEADQUARTERS)

Neutrik AG, Im alten Riet 143, 9494 Schaan
T +423 237 24 24, F +423 232 53 93, neutrik@neutrik.com

GERMANY / NETHERLANDS / DENMARK / AUSTRIA

Neutrik Vertriebs GmbH, Felix-Wankel-Strasse 1, 85221 Dachau, Germany
T +49 8131 28 08 90, neutrik@neutrik.de

GREAT BRITAIN

Neutrik (UK) Ltd., Westridge Business Park, Cothey Way
Ryde, Isle of Wight PO33 1 QT
T +44 1983 811 441, sales@neutrik.co.uk

FRANCE

Neutrik France SARL, 52 rue d'aguesseau, 1er etage, 92100 Boulogne-
Billancourt
T +33 1 41 31 67 50, info@neutrik.fr

USA

Neutrik USA Inc., 4115 Taggart Creek Road, Charlotte, North Carolina, 28208
T +1 704 972 30 50, info@neutrikusa.com

JAPAN

Neutrik Limited, Yusen-Higashinohonbashi-Ekimae Bldg., 3-7-19
Higashinohonbashi, Chuo-ku, Tokyo 103
T +81 3 3663 47 33, mail@neutrik.co.jp

HONG KONG

Neutrik Hong Kong LTD., Suite 18, 7th Floor Shatin Galleria
Fotan, Shatin
T +852 2687 6055, sales@neutrik.com.hk

CHINA

Ningbo Neutrik Trading Co., Ltd., Shiqi Street, Yinxian Road West
Fengjia Villiage, Hai Shu District, Ningbo, Zhejiang, 315153
T +86 574 88250833, sales@neutrik.com.cn

ASSOCIATED COMPANIES

Contrik AG

Steinackerstrasse 35, 8902 Urdorf, Switzerland
T +41 44 736 50 10, contrik@contrik.ch

H. Adam GmbH

Felix-Wankel-Straße 1, 85221 Dachau, Germany
T +49 08131 28 08-0, anfrage@adam-gmbh.de



www.neutrik.com