

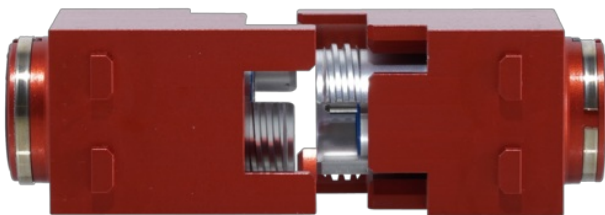
## FIBERFOX 4CH foxBRID



The FIBERFOX 4CH foxBRID is an expanded beam multimode hermaphroditic connector module and is suited for a vast array of industrial applications, including automation, robotics and railway. The innovative design ensures its ability for deployment in the toughest environments where constant performance and total reliability are critical. The module is designed according to the MIL-DTL-83526 standard and fits to other FIBERFOX solutions.

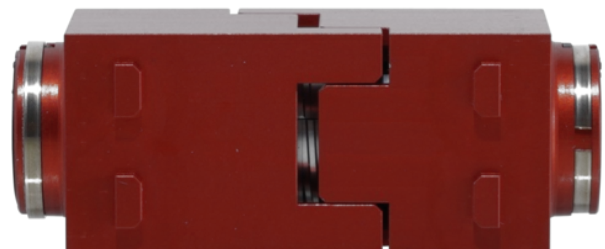


Benefiting from the expanded beam technology and the precision optical alignment the system creates high immunity against dust, mud, liquids and other contaminations. The FIBERFOX foxBRID module converts a standardized LC Patch cable into an expanded beam solution. It acts as a "feed-through" and fits into industrial standard shells.



For example:

- Han-Modular® Harting
- RockStar® ModuPlug Weidmüller
- Etc.



## Features & Benefits

- Very rugged plug face
- Insensitive to electromagnetic influences
- No splicer, no expertise required for Installation
- Very compact design - fits into industrial modular connectors
- Easy patching with common LC patch Cords
- Extremely service-friendly

## foxBRID 4CH



Code	Description
NO4M4RW-FX	FIBERFOX EBC15 foxBRID module 4CH MM OM4