

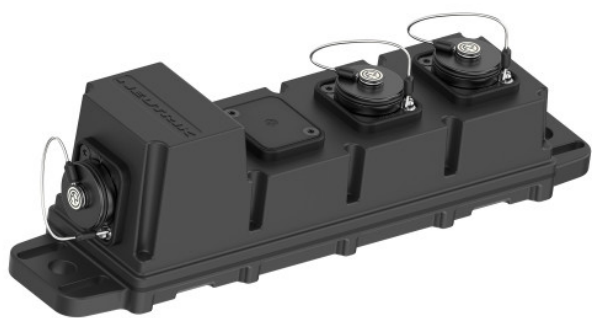
## opticalBAR

A compact, rugged fiber breakout solution designed for professional applications where flexibility, reliability, and durability matter. With an IP65 rating when mated, the opticalBAR enables smart fiber distribution in the most demanding environments.

Fully compatible with the opticalCON<sup>®</sup> ADVANCED series, the opticalBAR is available in the following core variants:

Product Code	From chassis
NO4M-OC-B2N02-A	1x opticalCON <sup>®</sup> QUAD MM
NO4S-OCB2N02-A	1x opticalCON <sup>®</sup> QUAD SM[PC]
NO4SA-OCB2N02-A	1x opticalCON <sup>®</sup> QUAD SM[APC]
NO12M-OCB3N04-A	1x opticalCON <sup>®</sup> MTP <sup>®</sup> 12 MM
NO12SA-OCB3N04-A	1x opticalCON <sup>®</sup> MTP <sup>®</sup> 12 SM[APC]







## Features & Benefits

- ✓ Flexible mounting options: Mounting holes for screws, Velcro straps and pegs; Truss clips (available soon)
- ✓ Outdoor Ready: IP65 rated in mated conditions
- ✓ Full compatibility with our opticalCON® ADVANCED products

## Application

- ✓ Camera connections
- ✓ Audio networks
- ✓ DMX networks
- ✓ InterCom

## Technical Information

Product	
Title	opticalBAR
Connection Type	Breakout Adapter
Gender	female

Mechanical	
Insertion force	< 45 N
Withdrawal force	< 45 N
Lifetime (typ.)	1000 mating cycles
Locking device	Push-Pull

Environmental	
Temperature range	-25 °C to +70°C
Protection class	IP65 (in mated condition)

Optical	
Insertion loss	LC < 0.4 dB per connection MTP® < 0.9 dB per connection
Optical connector	LC or MTP®